

## KEYNOTES

- [1] WALLS: 3-COAT CEMENT PLASTER FINISH SYSTEM
- [2] STONE VENEER - 'MOUNTAIN LEDGE'
- [3] STOREFRONT WINDOW SYSTEM CLEAR GLASS W/CLEAR ANODIZED ALUMINUM
- [4] TEXTURED FOAM CORNICE
- [5] METAL MAN-DOOR - PAINTED
- [6] STANDING SEAM METAL ROOFING
- [7] ALUMINUM CANOPIES
- [8] BOTTLE FILLER
- [9] TENANT SIGN UNDER SEPARATE PERMIT
- [10] WALL HUNG SINK
- [11] ACCENT LIGHTS
- [12] CONCRETE BASE
- [13] THIN BRICK VENEER - 'SANDED DART-TEX'

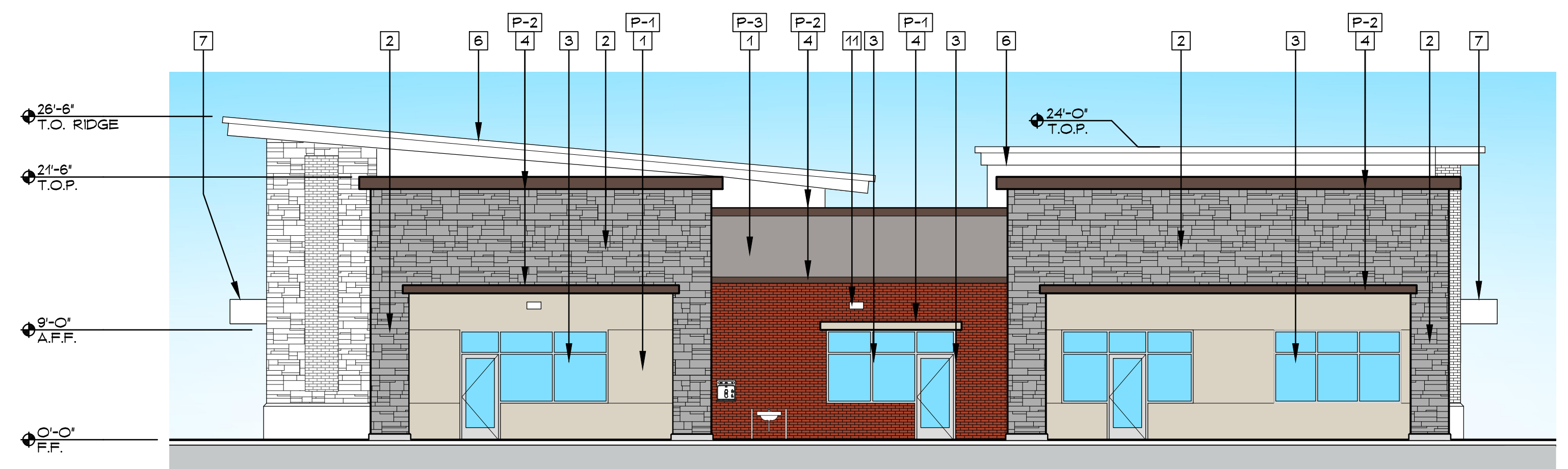
## COLOR SCHEDULE

- [P-1] BENJAMIN MOORE - 'PASHMINA' - #AF100
- [P-2] BENJAMIN MOORE - 'INCENSE STICK' - #2116-20
- [P-3] BENJAMIN MOORE - 'CINDER' - #F705



South Elevation

1/8" = 1'-0"



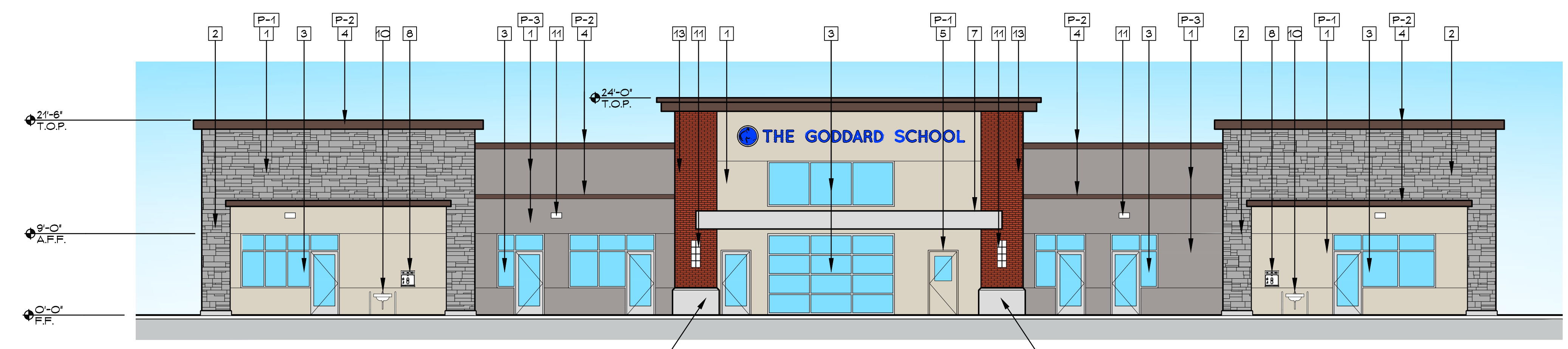
East Elevation

1/8" = 1'-0"



West Elevation

1/8" = 1'-0"



North Elevation

1/8" = 1'-0"

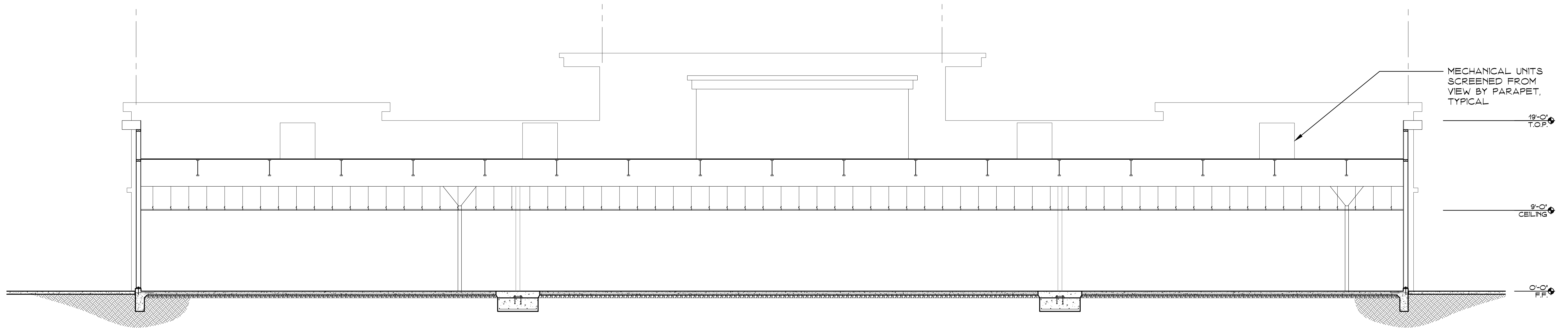


**PERKINS, WILLIAMS & COTTERILL ARCHITECTS**  
 3320 Data Drive, Suite 200 • Rancho Cordova, California 95670  
 T (916) 851-1400 F (916) 851-1408 E pwcarch@pwcarchitects.com

## Elevations

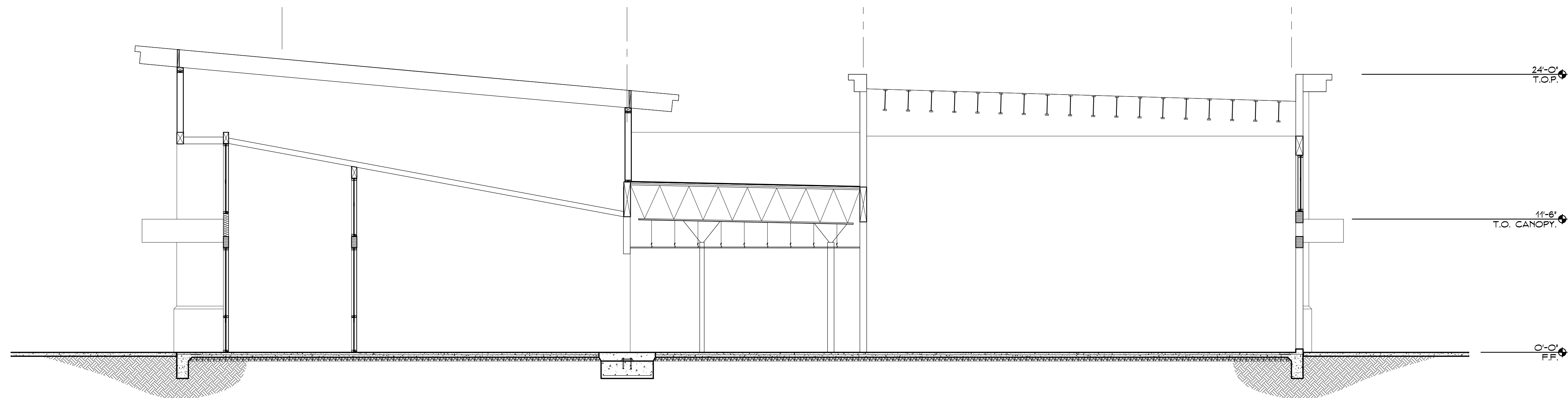
Project: GODDARD ROSEVILLE  
 Job No. 21-711 Date: 9-28-21  
 Scale: AS NOTED

*Goddard School*  
 Blue Oaks Blvd, Roseville CA



*North - South Section*

3/16" = 1'-0"



*East - West Section*

3/16" = 1'-0"



**PERKINS, WILLIAMS & COTTERILL**  
**ARCHITECTS**  
 3320 Data Drive, Suite 200 - Rancho Cordova, California 95670  
 T (916) 851-1400 F (916) 851-1408 E pwcarch@pwcarchitects.com

*Sections*

*Project:* GODDARD ROSEVILLE

*Job No.* 21-711 *Date:* 8-23-21

*Scale:* AS NOTED

*Goddard School*  
 Blue Oaks Blvd, Roseville CA